

# User's manual for KG-659E Programming

## (Updated version)

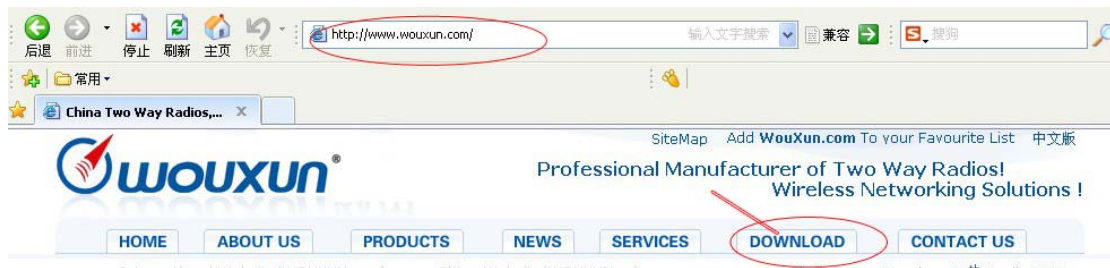
### Preparation:

#### Equipment and accessories required

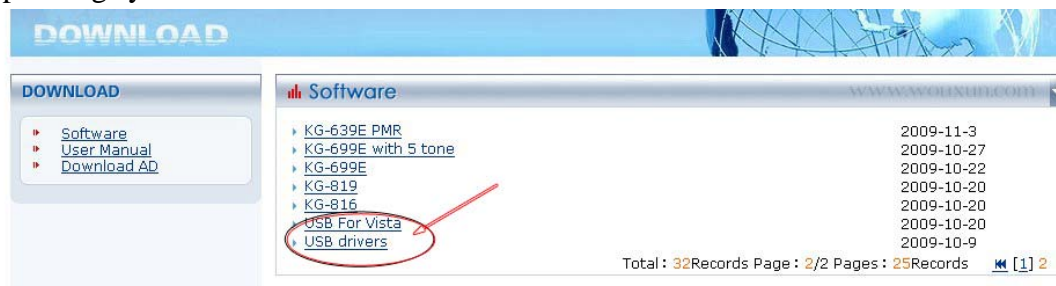
- (a) A **KG-659E Updated version** transceiver.
- (b) A serial port programming cable, OR:
- (c) A USB programming cable (with USB driver.)
- (d) The **KG-659E Updated version** programming software.

### Steps:

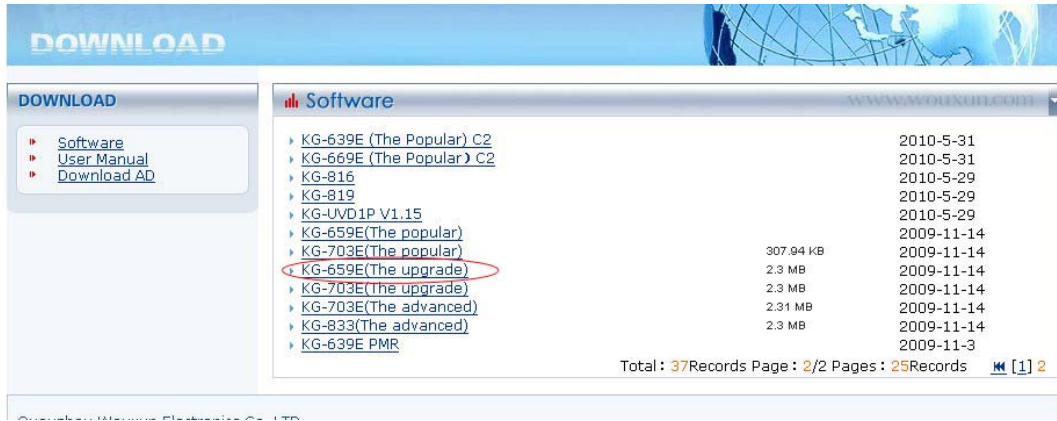
1. If using the USB programming cable download the USB driver from the web address below. Select the download link and go to the second page of the software list.



Download, unzip and install the USB driver that is compatible with your operating system.

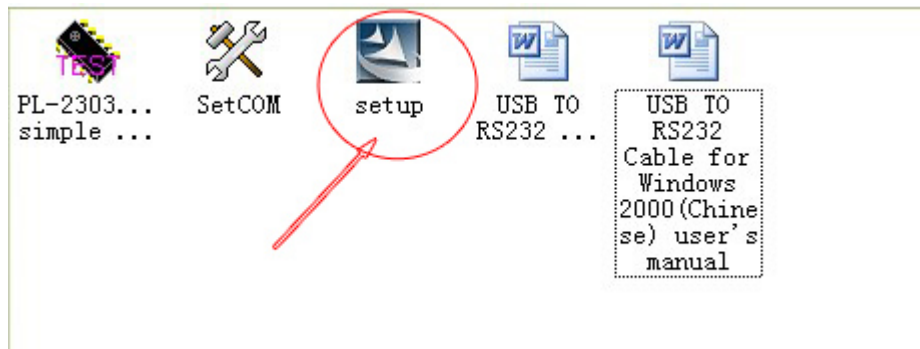


Download and unzip the programming software folder as below on wouxun website, please pay attention to model number, software version and latest update.

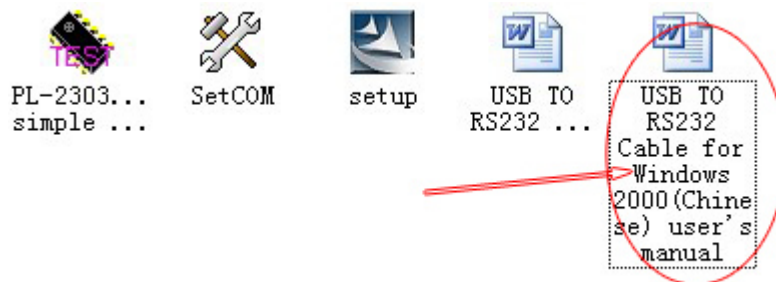


## 2. USB driver installment

Turn on the computer and confirm that the USB serial port is working as normal. Click the USB Driver file and find the sub file, click and then enter into the driver installation process



For detailed steps for installation, pls refer to the word file.



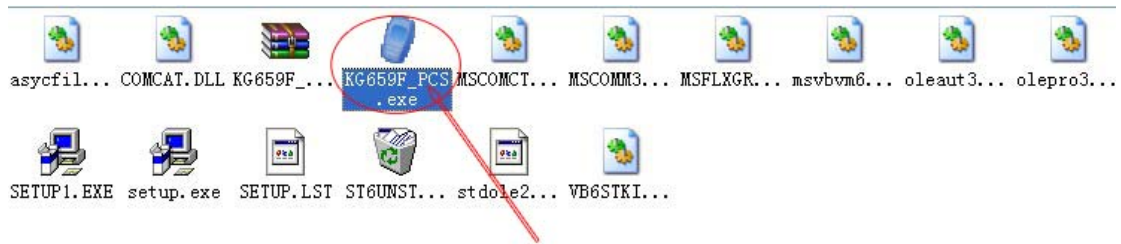
## 3. Connection

After installing the USB driver, carefully unclip the top of the plastic microphone socket cover and rotate it. (Note: The cover pivots at the bottom, and remains attached.) Insert the two pin end of the USB (or serial) cable and connect the other end to the computer.



#### 4. Interfacing

With the transceiver correctly connected, the computer will detect its presence and automatically locate the software procedure folder. Open the folder and find the icon shown below.



Double click and enter into the programming interface as shown below. Please note that if the connections is successful, the below column will show the version information about the connected radio, including the state of connection (**Connect well with radio**), band and the right of software, etc. If the connecting is unsuccessful, the column will show the state information: **communication fault**.



## 5. Language options

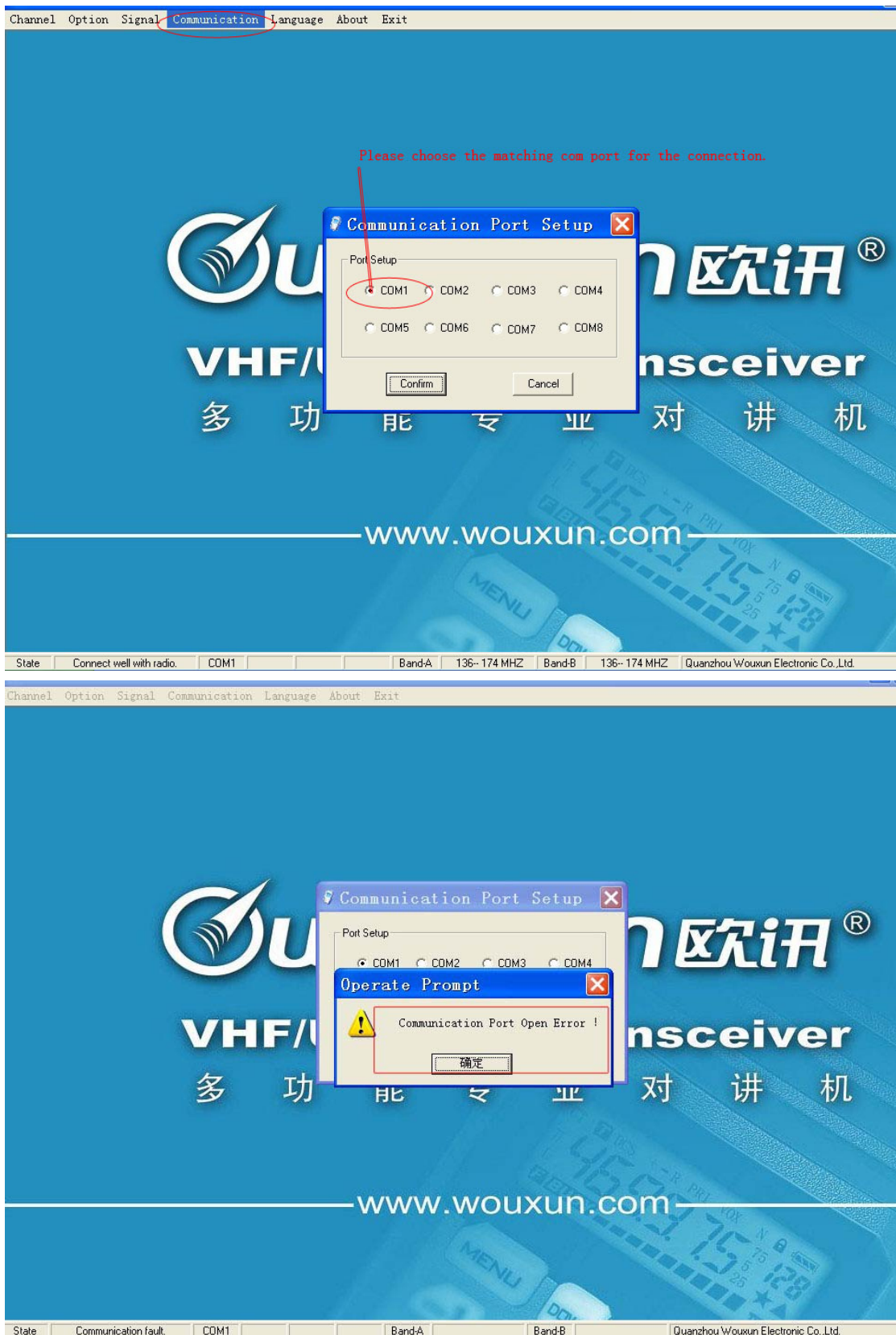
This software can support 2 options for the language setting: Chinese and English. Please choose the required **LANGUAGE** from the menu bar.



## 6. Communication Port

Click the **COMMUNICATION PORT** on the menu bar and check the com port for the connection between the transceiver and computer. Please choose the matching com port for connection.

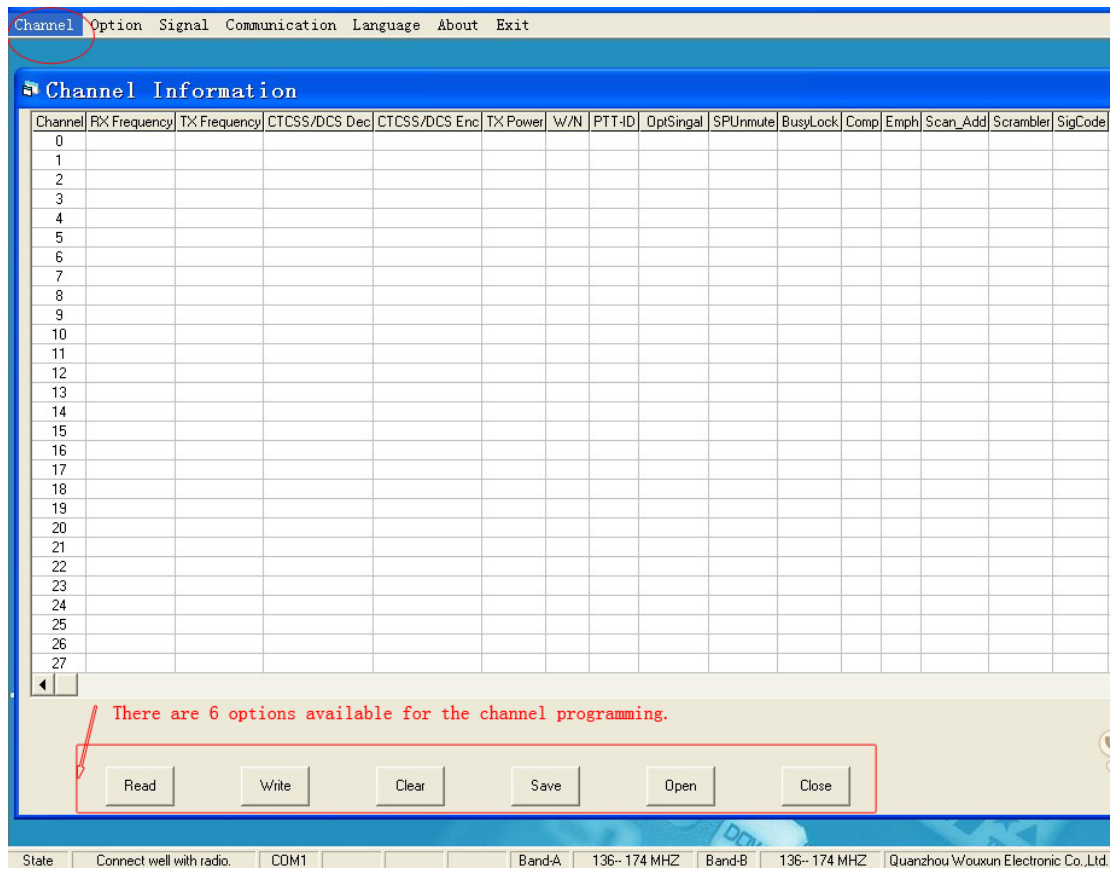




## 7. Channel

That shows the channel information about the radio, and it offers

**READ-WRITE-CLEAR-SAVE-OPEN-CLOSE** functions for the user to program. The user can double click the cell under each option to check and input the setting parameter according to these functional buttons.



### **Channel-READ:**

Please use this button to check the data information of the radio.

Channel Information

Channel	RX Frequency	TX Frequency	CTCSS/DCS Dec	CTCSS/DCS Enc	TX Power	W/N	PTT-ID	DptSingal	SPUnmute	BusyLock	Comp	Emph	Scan_Add	Scrambler	Sig	
0																
1	136.02500	136.02500	OFF	OFF	HIGH	W	OFF	OFF	QT	OFF	OFF	OFF	ON	OFF		
2	136.99500	136.99500	OFF	OFF	HIGH	W	OFF	OFF	QT	OFF	OFF	OFF	ON	OFF		
3	137.02500	137.02500	OFF	OFF	HIGH	W	OFF	OFF	QT	OFF	OFF	OFF	ON	OFF		
4	139.99500	139.99500	OFF	OFF	HIGH	W	OFF	OFF	QT	OFF	OFF	OFF	ON	OFF		
5	140.02500	140.02500	OFF	OFF	HIGH	W	OFF	OFF	QT	OFF	OFF	OFF	ON	OFF		
6	142.99500	142.99500	OFF	OFF	HIGH	W	OFF	OFF	QT	OFF	OFF	OFF	ON	OFF		
7	143.02500	143.02500	OFF	OFF	HIGH	W	OFF	OFF	QT	OFF	OFF	OFF	ON	OFF		
8	145.99500	145.99500	OFF	OFF	HIGH	W	OFF	OFF	QT	OFF	OFF	OFF	ON	OFF		
9	146.02500	146.02500	OFF	OFF	HIGH	W	OFF	OFF	QT	OFF	OFF	OFF	ON	OFF		
10	148.99500	148.99500	OFF	OFF	HIGH	W	OFF	OFF	QT	OFF	OFF	OFF	ON	OFF		
11	149.02500	149.02500	OFF	OFF	HIGH	W	OFF	OFF	QT	OFF	OFF	OFF	ON	OFF		
12	151.99500	151.99500	OFF	OFF	HIGH	W	OFF	OFF	QT	OFF	OFF	OFF	ON	OFF		
13	152.02500	152.02500	OFF										FF	OFF	ON	OFF
14	154.99500	154.99500	OFF										FF	OFF	ON	OFF
15	155.02500	155.02500	OFF										FF	OFF	ON	OFF
16	157.99500	157.99500	OFF										FF	OFF	ON	OFF
17	158.02500	158.02500	OFF										FF	OFF	ON	OFF
18	160.99500	160.99500	OFF										FF	OFF	ON	OFF
19	161.02500	161.02500	OFF										FF	OFF	ON	OFF
20	163.99500	163.99500	OFF										FF	OFF	ON	OFF
21	164.02500	164.02500	OFF	OFF	HIGH	W	OFF	OFF	QT	OFF	OFF	OFF	ON	OFF		
22	166.99500	166.99500	OFF	OFF	HIGH	W	OFF	OFF	QT	OFF	OFF	OFF	ON	OFF		
23	167.02500	167.02500	OFF	OFF	HIGH	W	OFF	OFF	QT	OFF	OFF	OFF	ON	OFF		
24	169.99500	169.99500	OFF	OFF	HIGH	W	OFF	OFF	QT	OFF	OFF	OFF	ON	OFF		
25	170.02500	170.02500	OFF	OFF	HIGH	W	OFF	OFF	QT	OFF	OFF	OFF	ON	OFF		
26	172.99500	172.99500	OFF	OFF	HIGH	W	OFF	OFF	QT	OFF	OFF	OFF	ON	OFF		
27	173.02500	173.02500	OFF	OFF	HIGH	W	OFF	OFF	QT	OFF	OFF	OFF	ON	OFF		

Operate prompt

Complete reading data from the transceiver.

确定

Reading 34 Data Block

Read Write Clear Save Open Close

State Connect well with radio. COM1 Band-A 136-174 MHZ Band-B 136-174 MHZ Quanzhou Wouxun Electronic C

### Channel-Write:

Please use this button to input the data information of the radio personally.



Channel Information

Channel	RX Frequency	TX Frequency	CTCSS/DCS Dec	CTCSS/DCS Enc	TX Power	W/N	PTT-ID	OptSingal	SPUnmute	BusyLock	Comp	Emph	Scan_Add	Scrambler	SigCode
0															
1	136.02500	136.02500	OFF	OFF	HIGH	W	OFF	OFF	QT	OFF	OFF	OFF	ON	OFF	1
2	136.99500	136.99500	OFF	OFF	HIGH	W	OFF	OFF	QT	OFF	OFF	OFF	ON	OFF	1
3	137.02500	137.02500	OFF	OFF	HIGH	W	OFF	OFF	QT	OFF	OFF	OFF	ON	OFF	1
4	139.99500	139.99500	OFF	OFF	HIGH	W	OFF	OFF	QT	OFF	OFF	OFF	ON	OFF	1
5	140.02500	140.02500	OFF	OFF	HIGH	W	OFF	OFF	QT	OFF	OFF	OFF	ON	OFF	1
6	142.99500	142.99500	OFF	OFF	HIGH	W	OFF	OFF	QT	OFF	OFF	OFF	ON	OFF	1
7	143.02500	143.02500	OFF	OFF	HIGH	W	OFF	OFF	QT	OFF	OFF	OFF	ON	OFF	1
8	145.99500	145.99500	OFF	OFF	HIGH	W	OFF	OFF	QT	OFF	OFF	OFF	ON	OFF	1
9	146.02500	146.02500	OFF	OFF	HIGH	W	OFF	OFF	QT	OFF	OFF	OFF	ON	OFF	1
10	148.99500	148.99500	OFF	OFF	HIGH	W	OFF	OFF	QT	OFF	OFF	OFF	ON	OFF	1
11	149.02500	149.02500	OFF	OFF	HIGH	W	OFF	OFF	QT	OFF	OFF	OFF	ON	OFF	1
12	151.99500	151.99500	OFF	OFF	HIGH	W	OFF	OFF	QT	OFF	OFF	OFF	ON	OFF	1
13	152.02500	152.02500	OFF	OFF	HIGH	W	OFF	OFF	QT	OFF	OFF	OFF	ON	OFF	1
14	154.99500	154.99500	OFF	OFF	HIGH	W	OFF	OFF	QT	OFF	OFF	OFF	ON	OFF	1
15	155.02500	155.02500	OFF	OFF	HIGH	W	OFF	OFF	QT	OFF	OFF	OFF	ON	OFF	1
16	157.99500	157.99500	OFF	OFF	HIGH	W	OFF	OFF	QT	OFF	OFF	OFF	ON	OFF	1
17	158.02500	158.02500	OFF	OFF	HIGH	W	OFF	OFF	QT	OFF	OFF	OFF	ON	OFF	1
18	160.99500	160.99500	OFF	OFF	HIGH	W	OFF	OFF	QT	OFF	OFF	OFF	ON	OFF	1
19	161.02500	161.02500	OFF	OFF	HIGH	W	OFF	OFF	QT	OFF	OFF	OFF	ON	OFF	1
20	163.99500	163.99500	OFF	OFF	HIGH	W	OFF	OFF	QT	OFF	OFF	OFF	ON	OFF	1
21	164.02500	164.02500	OFF	OFF	HIGH	W	OFF	OFF	QT	OFF	OFF	OFF	ON	OFF	1
22	166.99500	166.99500	OFF	OFF	HIGH	W	OFF	OFF	QT	OFF	OFF	OFF	ON	OFF	1
23	167.02500	167.02500	OFF	OFF	HIGH	W	OFF	OFF	QT	OFF	OFF	OFF	ON	OFF	1
24	169.99500	169.99500	OFF	OFF	HIGH	W	OFF	OFF	QT	OFF	OFF	OFF	ON	OFF	1
25	170.02500	170.02500	OFF	OFF	HIGH	W	OFF	OFF	QT	OFF	OFF	OFF	ON	OFF	1
26	172.99500	172.99500	OFF	OFF	HIGH	W	OFF	OFF	QT	OFF	OFF	OFF	ON	OFF	1
27	173.02500	173.02500	OFF	OFF	HIGH	W	OFF	OFF	QT	OFF	OFF	OFF	ON	OFF	1

Operate prompt

Complete writing the data to transceiver.

确定

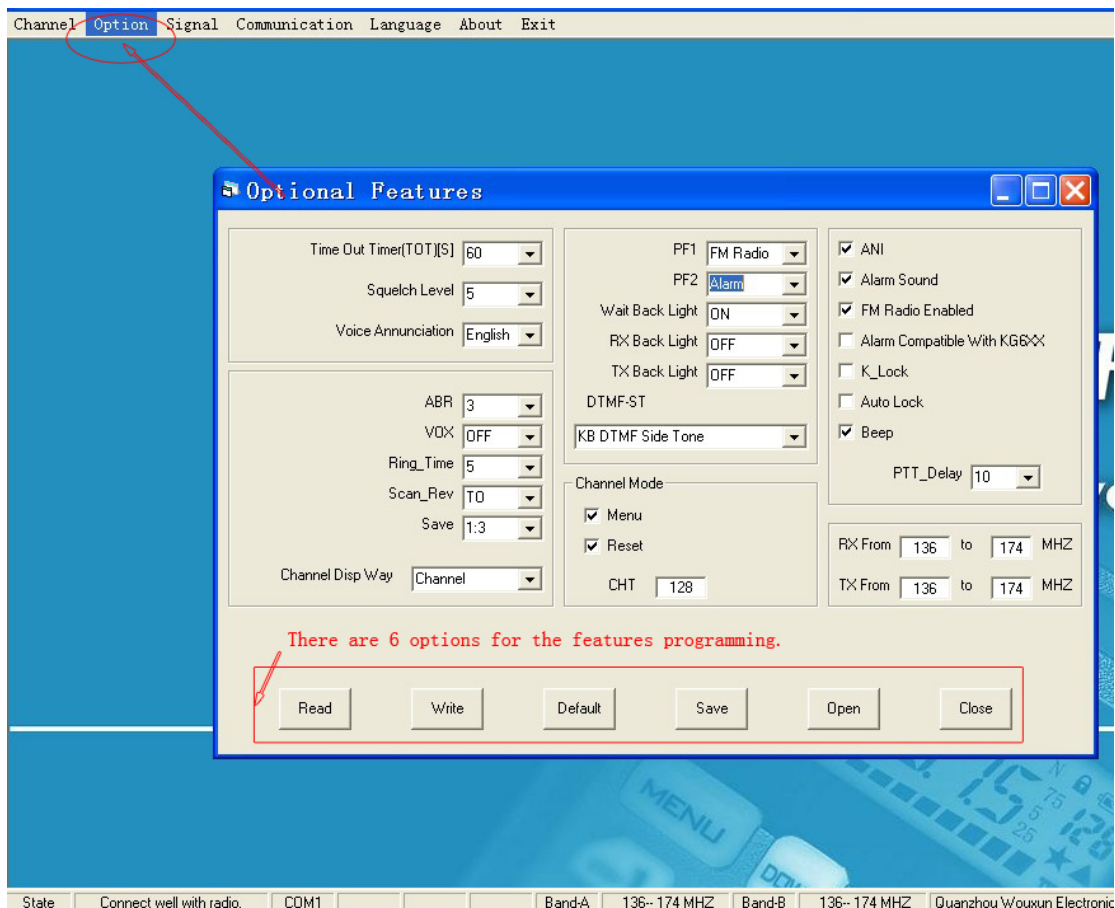
Writing 127 Channel

Read Write Clear Save Open Close

State Connect well with radio. COM1 Band-A 136-- 174 MHZ Band-B 136-- 174 MHZ Quanzhou Wouxun Electronic Co.,Ltd

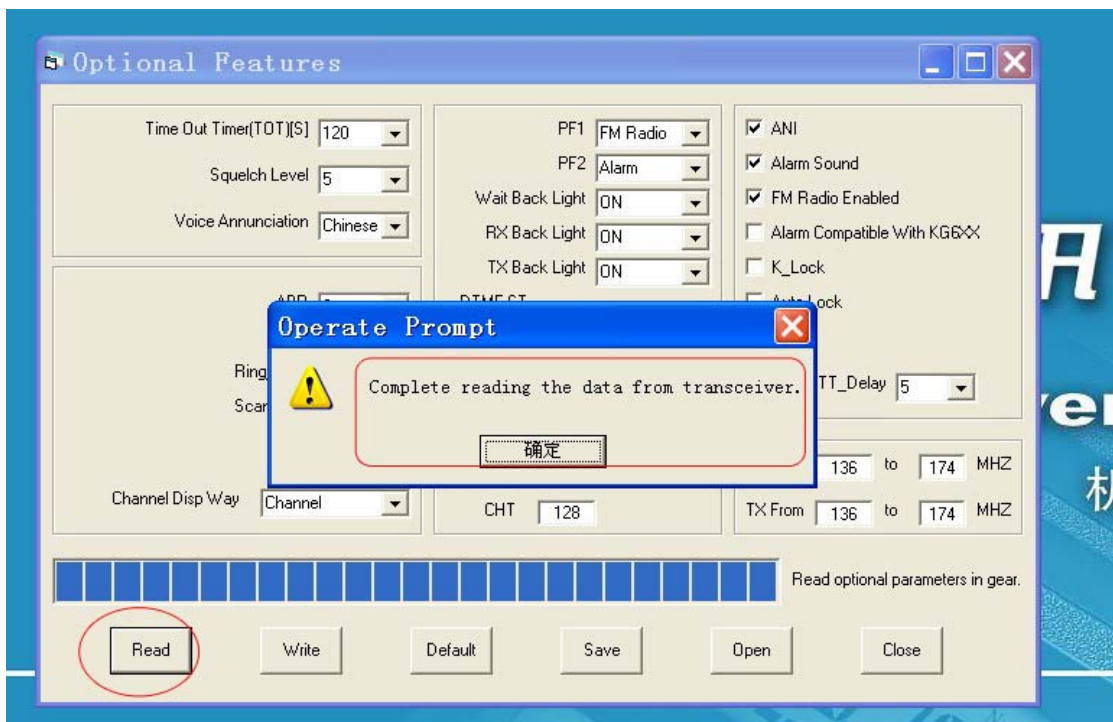
## 8. Option

For optional features, the user can program the radio by their own. Usually, the software provides **READ-WRITE-DELECT-SAVE-OPEN-CLOSE** functional buttons. The user can reprogram the radio personally.



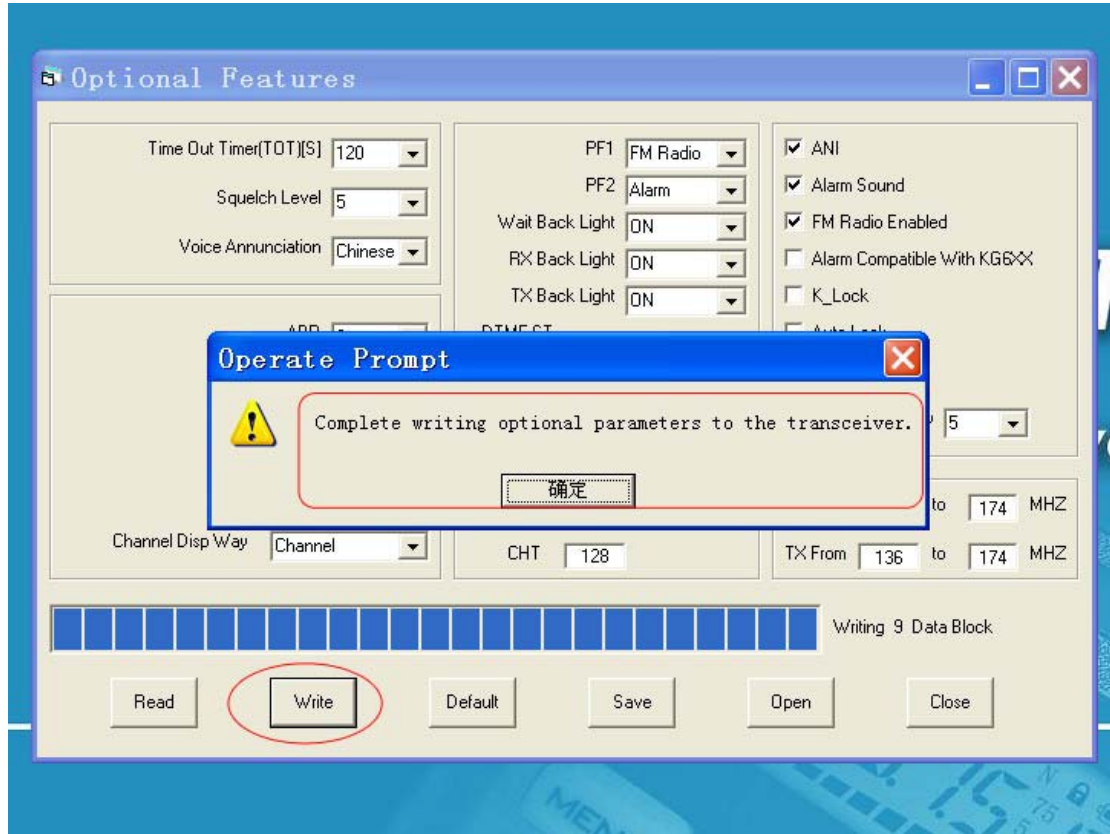
### Option-READ:

Please use this button to read out the function settings of radio.



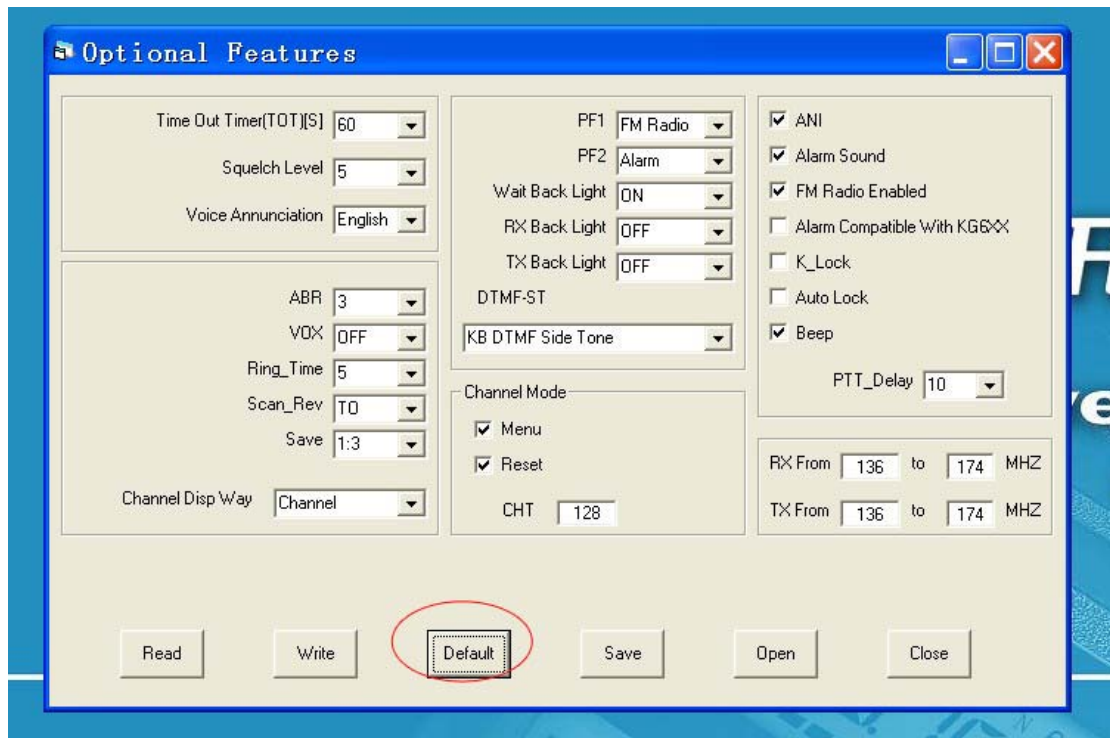
**Option-WRITE:**

Please use this button to input the function settings of radio personally.



**Option-DEFAULT:**

Please use this button to restore the settings of radio originally.



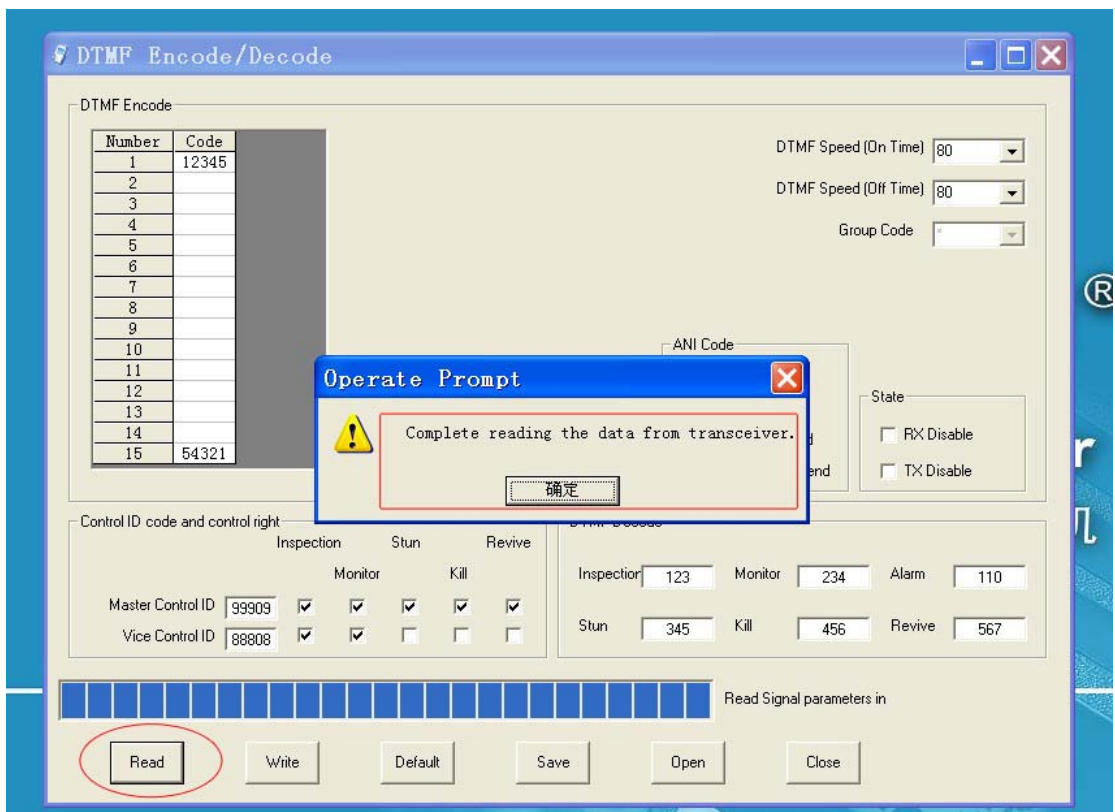
## 9. Signal-DTMF

For updated version, the radio has the DTMF Encode/Decode. This software is available for the **DTMF Encoding/Decoding programming and the ANI code settings** as below.



**DTMF-READ:**

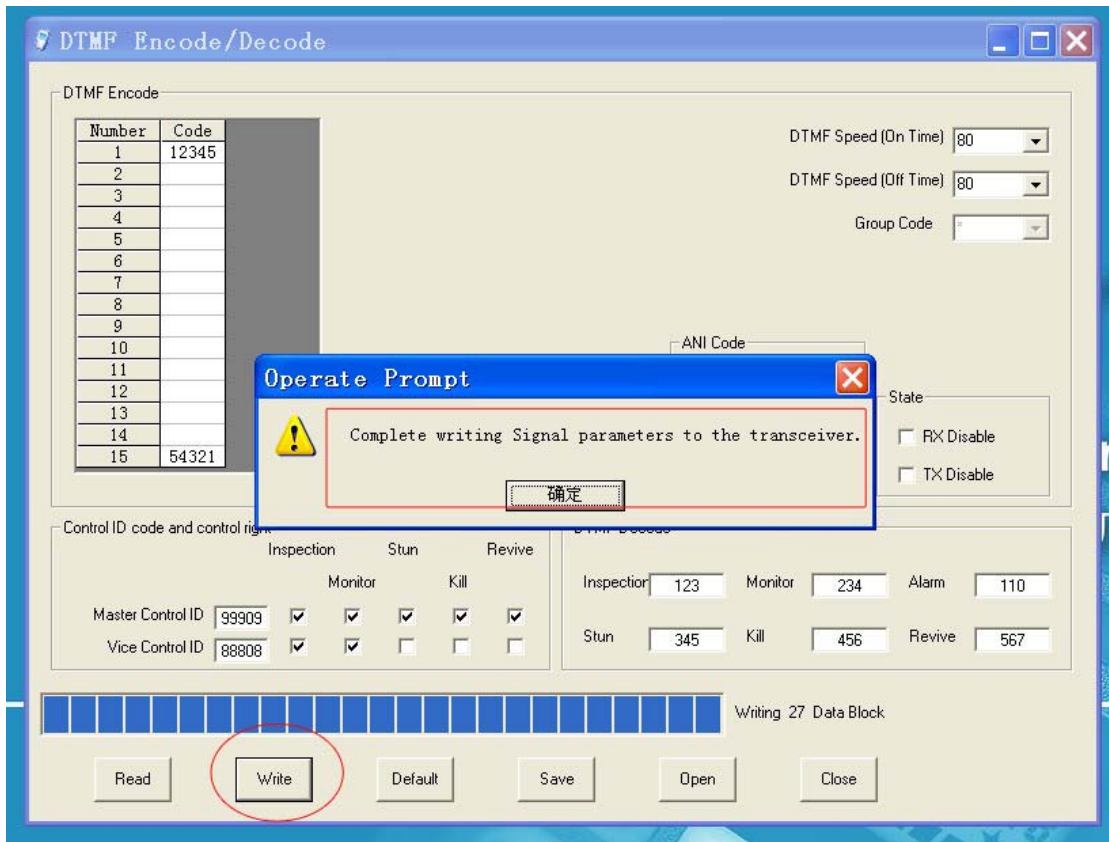
Please read out the DTMF data information from the radio.





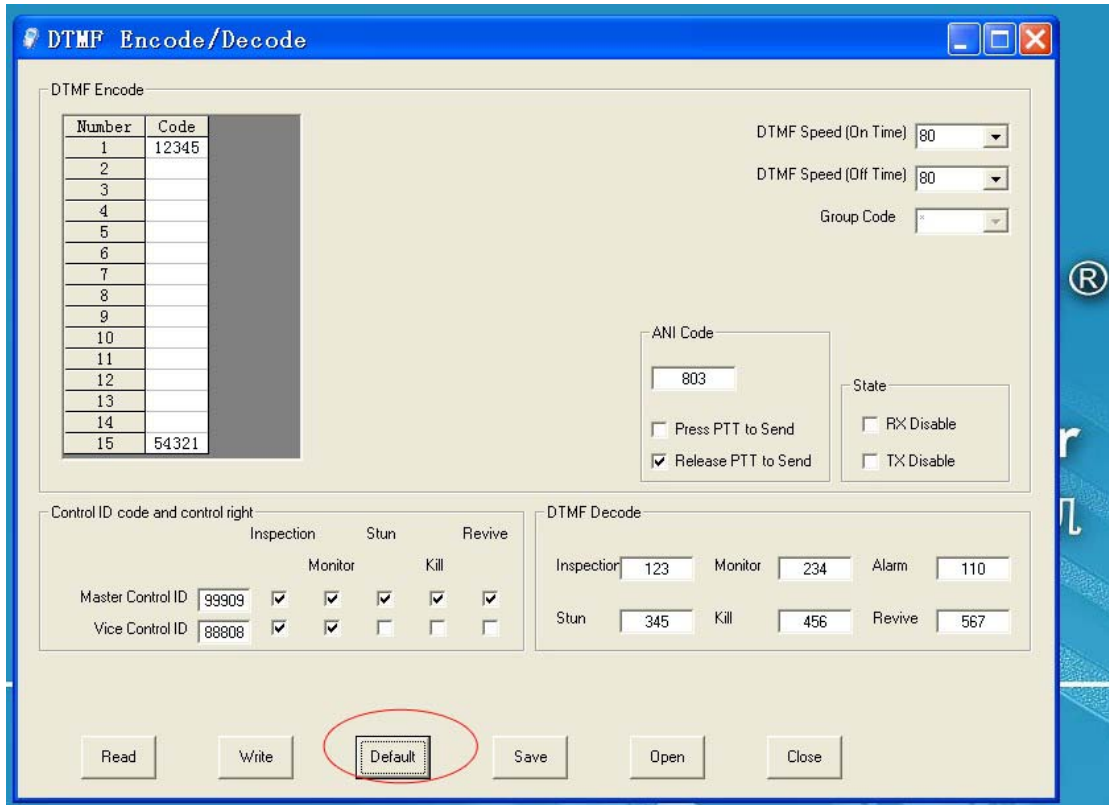
### DTMF-WRITE:

Please write the DTMF data information into the radio.



### DTMF-DEFAULT:

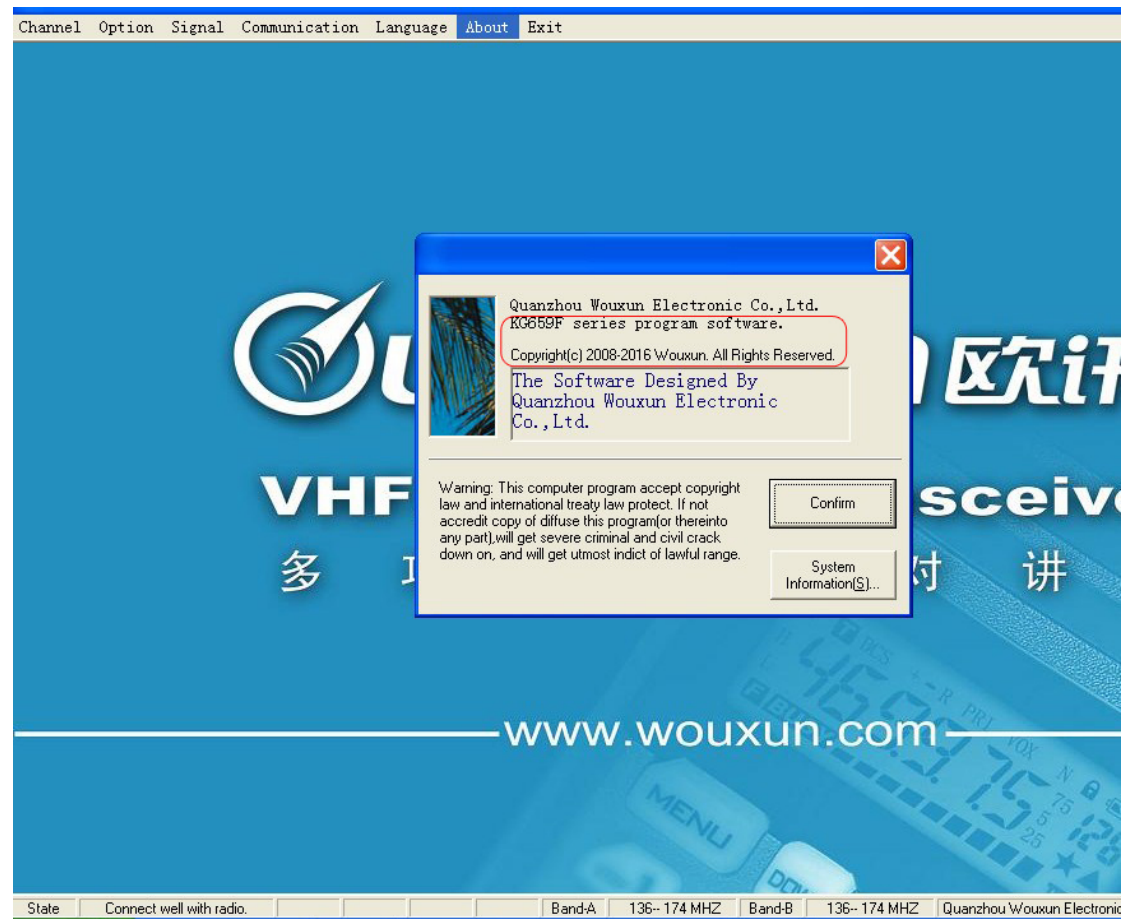
Please restore the DTMF data information into the radio.





## 10. About

It shows about the version authority of the software.



## 11. Exit

After finishing the programming, click the Exit to accomplish the programming.

Quanzhou Wouxun Electronic Co., Ltd. KG659P series program software.

Channel Option Signal Communication Language About **Exit**



# WOUXUN 欧讯®

## VHF/UHF FM Transceiver

多 功 能 专 业 对 讲 机

[www.wouxun.com](http://www.wouxun.com)



State Connect well with radio COM1 Band-A 136--174 MHz Band-B 136--174 MHz Quanzhou Wouxun Electronic Co. Ltd

